

---

# The Celeste Chair



**STANDARD FEATURE:** Dual Swing Away Arms

## Comfort Range (ELECTRIC - 1 - MOTOR)

The CELESTE chair is an electric lift chair ultra-soft comfortable, multi-position and allows medical care access, easy transfer and cleaning thanks to its removable armrest.

The CELESTE can be used at home and also nursing & aged care facilities, due to its coating with the fire regulations and easy cleaning.

It's fitted with a zipped quilt set, easy to replace and washable at 30° (low-cost repairing of your armchair).

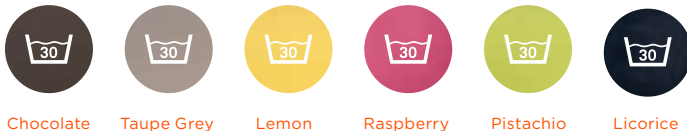
This electric lift chair is fitted with removable and/or retractable armrest for easy transfer (evolving chair in case of new pathology for the patient).

The CELESTE chair with its aesthetic design, and adaptability with 2 seat depths and 2 seat widths, is handmade in France .

The swing away arm is great for clients that wish to side transfer, and also ensure that the client is sitting correctly in the chair to ensure the best pressure care control. The accessories include a raiser kit which enables the use of a patient lifter.

### Colors

PVC/PU coating waterproof



Chocolate    Taupe Grey    Lemon    Raspberry    Pistachio    Licorice

Polyester Velvet  
water-repellent coating

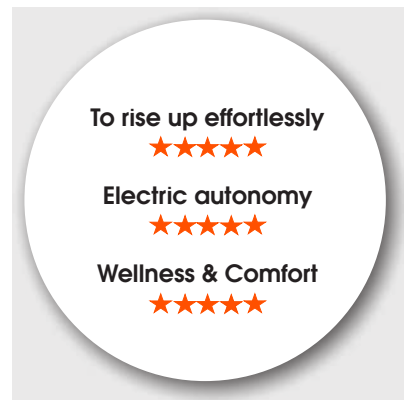


Brown    Raw

Mottled fabric



Grey



## Characteristics

### Lift chair

#### • Padding

- Ultra-soft feeling
- Polyurethane hollow silicon fiber filling
- Less pressure points

#### • Quilt sets washable at 30°C and/or removable

#### • 2 seat base widths and 2 seat base depths

- Width: 44 or 50 cm
- Depth: 45 or 55 cm

#### • Height ground/seat: 45 cm

#### • Armrests retractable and/or removable

- Easy transfers (left and right)

#### • Warranties






- Electric actuator: 5 years
- Mechanism: 2 years

#### • Maximum weight: 160 kg

#### • Overall dimension:

- Height 108.50 x Length 93 x Depth 90 cm

## Celeste

	CODES	DESCRIPTION
	CL6020	CHAIR, Riser Recliner, Celeste, Mottled Grey, 1 motor, 55cm Depth
	CL6018	CHAIR, Riser Recliner, Celeste, Mottled Grey, 1 motor, 45cm Depth
	CL6024	CHAIR, Riser Recliner, Celeste, Taupe Grey, 1 motor, 55cm Depth
	CL6022	CHAIR, Riser Recliner, Celeste, Taupe Grey, 1 motor, 45cm Depth
	CL6012	CHAIR, Riser Recliner, Celeste, Velvet Raw, 1 motor, 55cm Depth
	CL6010	CHAIR, Riser Recliner, Celeste, Velvet Raw, 1 motor, 45cm Depth
	CL6016	CHAIR, Riser Recliner, Celeste, Licorice, 1 motor, 55cm Depth
	CL6014	CHAIR, Riser Recliner, Celeste, Licorice, 1 motor, 45cm Depth
	CL6036	CHAIR, Riser Recliner, Celeste, Chocolate Marron, 1 motor, 55cm Depth
	CL6034	CHAIR, Riser Recliner, Celeste, Chocolate Marron, 1 motor, 45cm Depth

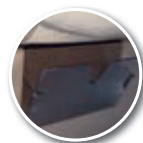
## Options



Mobility Kit  
SC6032



Hoist Friendly Kit  
SC6030



Magazine Holder  
SC6026



Tray  
SC6028



At Enable we source quality, affordable and innovative products globally and have them available for fast delivery. But we do more than just provide products.

We give the knowledge and support to help our customers grow their business and deliver better life care.



ENABLE LIFECARE PTY LTD

T 1300 370 370

[enablelifecare.com.au](http://enablelifecare.com.au)