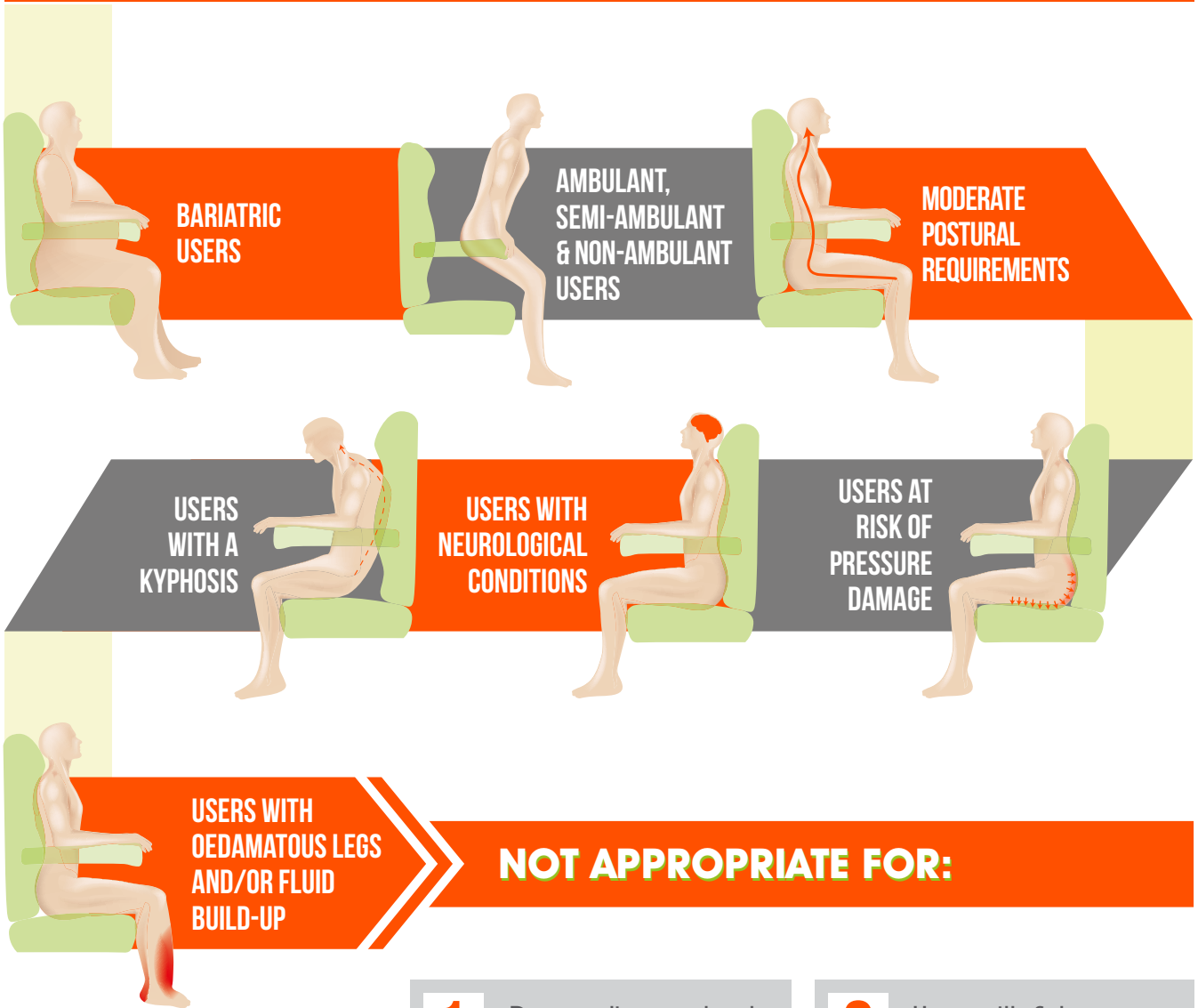

Configura[®] Bariatric[™]

Information & Assessment Form



APPROPRIATE FOR:



NOT APPROPRIATE FOR:

- 1** Demanding postural requirements
- 2** Users with fixtures and contractures
- 3** Users who need to be transported from room to room

INTENDED ENVIRONMENT



Domestic use

Care homes or nursing homes

PRESCRIBER DETAILS

Name:

Department:

Address:

.....

.....

Telephone:

Email:

USER DETAILS

Name:

Address:

.....

.....

Telephone:

Email:

User weight:

Pressure Care:

Posture:

Mobility:

Diagnosis:

Prognosis:

Transfer method:

Current seating:

Problems with current seating:

Notes:

.....

.....

.....

STANDARD CHAIR SPECIFICATION

Configura® Bariatric brings Configura® technology to bariatric seating. This offers unprecedented adjustability, flexibility and peace of mind for the prescriber.

It is also available with a full width alternating air cushion to meet the needs of users at high risk of pressure damage.

- **EASY ADJUSTMENT** before and after delivery to suit varied and changing needs
- **QUICK** and easy to recycle via removable, washable covers
- **AFFORDABLE**, providing more consistent budget management and significant savings on special chairs

254 kg or 317 kg
capacity

127 kg / 158 kg
Legrest capacity

Tilt-in-space option
available

Medium-high risk
pressure relief as
standard



Independent backrest

Independent legrest

Adjustable width
and depth

Riser function

Upgrade to custom Black
Faux Leather

DUAL MOTOR OPERATION (STD)



Dual motor operation allows independent adjustment of the legrest elevation and backrest recline. This enables infinite positioning for maximum comfort and support for users with more complex requirements.

A dual motor chair has four buttons on the handset.

Does not have Tilt-in-Space.

TILT-IN-SPACE (WITH INDEPENDENT LEGREST)

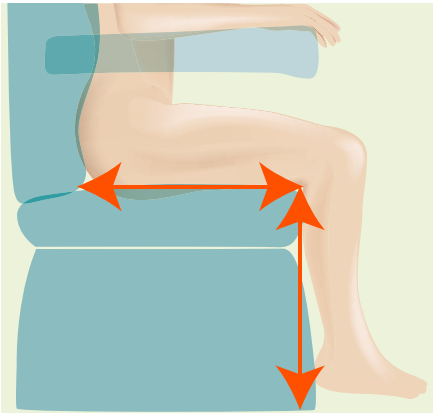


Tilt-in-space improves pelvic stability and posture, pressure distribution, circulation, makes hoisting easier and reduces the tendency to slip forward in the chair.

By maintaining the same angle at the hips (i.e. the same angle between backrest and seat base), and tilting the entire chair back, the user can achieve a relaxed position whilst maintaining pelvic stability. Maintaining the position of the pelvis promotes good sitting and reduces the user's susceptibility to developing poor posture. As more weight is transferred through the trunk and less through the base, a larger seating footprint is achieved and pressure is distributed over a wider area. This reduces the risk of pressure sores in the sensitive sacral and ischial tuberosity areas.

The ability to have the user's ankles higher than the hips can also aid circulation and reduce fluid build-up in the legs. When hoisting, Tilt-in-Space enables gravity to assist in correct positioning of the user's pelvis at the back of the chair.

The independent legrest enables tilt to be used whilst lowering the legs. Suitable for users with reduced knee flexion or shortened hamstrings.

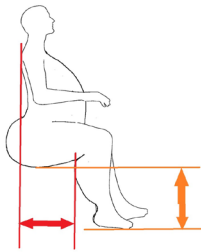


SIZE

Key thoughts:

- 3 measurements are required for selecting a chair; seat depth, seat height and seat width – see below drawings for clarity.
- When selecting a chair size, prioritise the chair measurements in the following order: seat depth, seat height then seat width. This will ensure the selected size is the right overall proportion for the user.
- If you cannot find the size you need, check out the other chairs in our range or contact us as we may be able to supply a special size.

How to Measure a Plus size Service User



Seat Depth **

Seat Height *

* Seat Height. Take measurement from floor to lowest point of body mass
 ** Seat Depth. Take measurement from shoulder blade to the back of the calf

Measurement guide applicable to Configura Bariatric Chair only.



Tilt in Space Configura Bariatric (Dual Motor with Independent Legrest) in Black Vinyl

Product Code	Seat Height	Seat Width	Seat Dept	Select
CR5470	406mm (16")	609mm (24")	508mm (20") - 558mm (22")	<input type="checkbox"/>
CR5471	406mm (16")	660mm (26")	508mm (20") - 558mm (22")	<input type="checkbox"/>
CR5472	406mm (16")	711mm (28")	508mm (20") - 558mm (22")	<input type="checkbox"/>
CR5473	457mm (18")	609mm (24")	508mm (20") - 558mm (22")	<input type="checkbox"/>
CR5474	457mm (18")	660mm (26")	508mm (20") - 558mm (22")	<input type="checkbox"/>
CR5475	457mm (18")	711mm (28")	508mm (20") - 558mm (22")	<input type="checkbox"/>
CR5476	508mm (20")	609mm (24")	508mm (20") - 558mm (22")	<input type="checkbox"/>
CR5477	508mm (20")	660mm (26")	508mm (20") - 558mm (22")	<input type="checkbox"/>
CR5478	508mm (20")	711mm (28")	508mm (20") - 558mm (22")	<input type="checkbox"/>

The TIS Configura Bariatric has a standard seat depth of 20" or 22", as this adjustment is a built-in feature. For a seat depth of 18", the Configura Bariatric Depth Adjustment Kit accessory is required - CA2801 for Balck Vinyl or CA2432 for Duratek

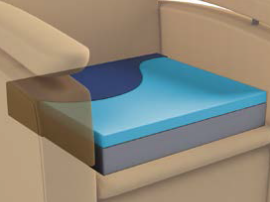


Standard Configura Bariatric (Dual Motor) in Duratek

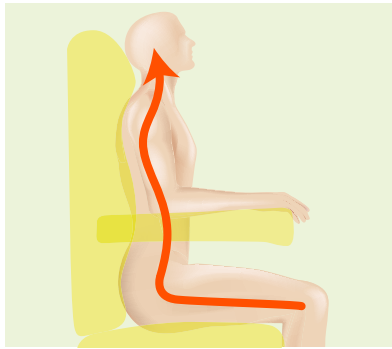
Size	Product Code	Select	Seat Height	Select	Seat Width	Select	Seat Depth	Select
254kg	CR5412*	<input type="checkbox"/>	406mm (16"*)	<input type="checkbox"/>	711mm (28") ^{ooo}	<input type="checkbox"/>	558mm (22")	<input type="checkbox"/>
					660mm (26")	<input type="checkbox"/>	508mm (20")	<input type="checkbox"/>
	CR5414**	<input type="checkbox"/>	457mm (18")**	<input type="checkbox"/>	609mm (24") ^{ooo}	<input type="checkbox"/>	457mm (18") ^o	<input type="checkbox"/>
317kg	CR5420	<input type="checkbox"/>	457mm (18")	<input type="checkbox"/>	863mm (34") ^{oo}	<input type="checkbox"/>	558mm (22")	<input type="checkbox"/>
					812mm (32")	<input type="checkbox"/>	508mm (20")	<input type="checkbox"/>
					762mm (30") ^{ooo}	<input type="checkbox"/>	457mm (18") ^o	<input type="checkbox"/>

Select for the TIS or Standard Configura Bariatric above

	Product Description	Code	Select
o	Configura Bariatric Duratek Depth Adjustment Kit	CA2432	<input type="checkbox"/>
o	Configura Bariatric Black Vinyl Depth Adjustment Kit	CA2801	<input type="checkbox"/>
oo	Configura Bariatric Armrest, 24" (Std TIS), 30" (Supa), Duratek, PAIR	CA2514	<input type="checkbox"/>
ooo	Swap the 26"/32" LHS & RHS armrest around to create seat width of 28"/34"	N/A	<input type="checkbox"/>

PRESSURE CARE OPTIONS

Description	Long description	Part number		Select
Visco (std)	Prevention: Heat sensitive memory foam moulds to the user providing maximum support and pressure reduction. Suitable for users who are at risk of pressure damage.	as per (std)		<input type="checkbox"/>
Castellated	Prevention: Castellated, pressure reducing cushion for users who cannot tolerate Visco foam. Similar in performance to the Visco cushion.	CA2434		<input type="checkbox"/>
Cushionair Alternating Seat Cushion w/ pump	Management: Powered alternating air cushion which coupled with the memory foam and vapour permeable fabric of the overlay provides excellent comfort, stability and pressure relief. 254kg weight capacity.	CA2720		<input type="checkbox"/>



POSTURE

Key thought:

- Tilt-in-space can significantly improve midline sitting so increased lateral support may not be necessary if the user tends to slump mildly to one side.

POSTURE MANAGEMENT OPTIONS

Description	Long description	Part number		Select
Multi-adjustable Pillow Backrest (std)	Accommodation: each pillow is height adjustable and filling can be customised to the user. Offering mild to moderate postural support, the Multi-adjustable Pillow Backrest is highly effective for users with a kyphosis or a scoliosis. Excellent for postural accommodation and comfort.	(std)		<input type="checkbox"/>
2 x Lateral Supports	Accommodation: Lateral supports to fit underneath the backrest pillows to provide mild lateral support combined with the comfort and adjustability of the Multi-Adjustable Pillow Backrest. (As used with the Adjustable Lateral Support System below).	CA2413		<input type="checkbox"/>
Profiled Headrest	Suitable for users with reduced head control. Fits over the shoulders.	CA2448		<input type="checkbox"/>

EXTRAS

Description	Long description	Part number		Select
Channel legrest	Provides side support on legrest to reduce abduction.	CA2446		<input type="checkbox"/>
Right hand control (std)		(std)		<input type="checkbox"/>
Left hand control		(std)		<input type="checkbox"/>
Rise Setting (std)	10 degrees of tilt.	(std)		<input type="checkbox"/>
Optional Adjustment	30 degrees of tilt.	Only Available on 254 kg TIS Model		<input type="checkbox"/>
Battery Back Up	Provides Battery Back Up in case of power cuts. Approx 20 cycles.	CA2402		<input type="checkbox"/>
Duratek fabric on backrest	Non-pressure reducing.	CA2480 254 kg BRMAPKT-0- CFBSUP-020 317 kg		<input type="checkbox"/>

OVERALL DIMENSIONS

(please note these are approximate)

	Bariatric and Bariatric Tilt-in-space 254 kg	Bariatric 317 kg
Complete chair	92 kg	104 kg
Backrest	20 kg	25 kg
Base part only including components	72 kg	80 kg
In normal sitting		
Height	1120 mm	1125 mm
Width	1020 mm	1280 mm
Depth	900 mm	900 mm
In recline		
Height	1050 mm	1050 mm
Width	1020 mm	1280 mm
Depth	1700 mm	1700 mm
In rise		
Height	1450 mm	1450 mm
Width	1020 mm	1280 mm
Depth	1000 mm	1000 mm
Backrest height	1150 mm	1150 mm
Floor to top of arms	600 mm	600 mm
Arm height	200 mm	200 mm
Height to front of seat in rise	500 mm	500 mm
Height to back of seat in rise	650 mm	650 mm

**CLEANING
INSTRUCTIONS
FOR THE FABRIC**

Clean and care for the fabric on a regular basis and it will maintain its condition and appearance.

The new generation of Microfibre cleaning cloths without soap are extremely effective for general care and maintenance. You can also wipe clean regularly with a damp cloth to remove dust particles and light soiling. It is recommended to vacuum the upholstery once a week.

Most stains can be removed by wiping clean. Remove spillages promptly (within 15 minutes) with cold water. For extreme soiling control use a 5% Sodium Hypochlorite (Bleach) solution.

Do not machine wash or dry clean.

Do not apply other chemicals such as polish, solvents or stain remover.



At Enable we source quality, affordable and innovative products globally and have them available for fast delivery. But we do more than just provide products.

We give the knowledge and support to help our customers grow their business and deliver better life care.



ENABLE LIFECARE PTY LTD

T 1300 370 370

enablelifecare.com.au