
Duracare CX12

The illuminating solution for your ceiling lift needs.



We are committed to providing a complete line of innovative, top quality equipment to the healthcare industry. Its safe patient handling lifts can revolutionize the care environment by helping organizations prevent caregiver and patient injuries, minimize falls, reduce the severity of pressure injuries, and increase patients' mobilization.

Designed with the patient, caregiver, and service personnel in mind, the Duracare CX12™* emphasizes safety, reliability and ease of use. It provides an exceptional solution, tested to the most stringent international standards, and its extensive set of integrated safety systems ensures the patient and caregiver feel secure at all times. Service and maintenance can be performed quickly since no tools are required to remove the CX12 from the track or to access its motor, thereby reducing downtime and enabling the product to be used as intended.

Injury and fall prevention are driving forces behind any Duracare design. Innovative features such as the end illumination panels and weight indicator allow caregivers to perform vital job duties safely and with minimal disruption to the patient.

The refreshing blend of contemporary design and maximum functionality ensures the CX12 will meet your needs today and as they evolve. Compatible with a variety of comfortable Hoyer slings and complemented with an array of optional professional services such as design planning, installation services, technical support and Joerns' Prevent® safe patient handling program, CX12 is sure to provide the perfect overhead lifting solution.

Duracare CX12

Ted Hoyer, a young man with quadriplegia, designed the first lift over 60 years ago. Frustrated by his lack of mobility and independence, he drafted an invention that delivered opportunity and freedom. With an intimate understanding of the needs of people with disabilities, Ted developed practical and effective solutions and branded them Hoyer®—the most recognized name in patient handling.

*Patents Pending



Reduces staff injury



Reduces causes of Never Events



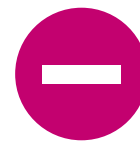
In the room and ready when you are



Improves safe patient handling compliance



Total room coverage



Less space required to operate and store



Night Illumination

The CX12 illuminates during use in low light conditions which creates an ambient, warm glow in the immediate vicinity of the lift. CX12's illumination helps patients sustain their natural circadian rhythm while caregivers perform vital tasks in a safely, warmly lit environment.

Powered by energy efficient LEDs, the light intensity and duration can be customized to suit individual and environmental needs.



A. Unique CX12 Chauffeur™*

The unique 4-wheel drive power traverse option offers excellent in-rail traction and reduces the effort required by the caregiver when transferring and positioning patients.

B. Extensive Lifting Range

With a lifting range of 94.5", the CX12 can transfer patients from the floor to high surfaces, making it suitable for a variety of environments.

C. Choice of Spreader Bars & Cradle

The CX12's compatibility with multiple spreader bars and cradle guarantees that the CX12 accommodates both clip and loop style slings. This allows a wider choice of slings to meet the patient and facility's specific needs.

D. Quick Release Spreader Bar

Easily detached from the lifting strap via a simple and safe quick release mechanism, the spreader bar allows for fast and effective changeovers, ultimately enabling broader applications and clinical use. The quick release mechanism provides positive feedback indicating the spreader bar is securely in place.

E. Backlit LCD Screen

The large, backlit LCD screen makes reading and navigating the menus, Duracare Smart™ Monitor data and safety warnings easier.

F. Intuitive User Controls

Icon driven user controls allow access to service related data, customizable settings and backup controls with ease. The lift can be fully operated from these controls for urgent needs.

G. Power Save / Sleep Mode

To conserve battery life, the Elara automatically switches to sleep mode after a short period of inactivity. Full operating power is restored when user input is detected.

H. Durable Hand Control

Rated to IPX6, the hand control is fully protected from incidental water exposure up to a depth of 1 meter, ideal for poolside environments and wet room locations.

I. Safety Systems

The CX12 has a host of safety features including an overload limit switch, an emergency stop and a slow emergency lower function coupled with both audible and visual alerts. Patient and caregiver safety is always at the forefront of every Joerns design.

J. Weight Monitor & Scale Options

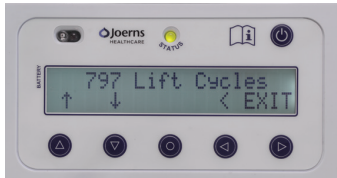
Weight fluctuations can be early warning signs of healthcare concerns. The CX12 is equipped with an integrated weight monitor* that provides weight estimates while a patient is in the lift. CX12 can also be fitted with a Class III scale, offering medically approved accuracy and traceability, all with a dual screen display for ease of use.

*Patents Pending

Duracare Smart™ Monitor

The Smart Monitor accurately records usage and diagnostic data for your lift as well as potential misuse. The intelligent system reminds you to schedule key service and maintenance, helping to safeguard the lift's optimum condition, reducing downtime and promoting product longevity and uninterrupted care.

The following data points are readily accessible from the menu:



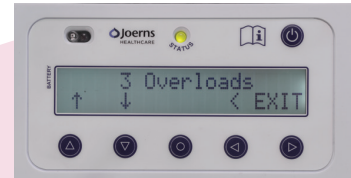
LIFT CYCLE COUNTER

Accurately records and displays the total number of lift cycles performed.



WORK COMPLETED

Records the precise amount of work completed by the lift's motor over its lifetime.



OVERLOAD DETECTION

Records the number of instances a lift in excess of the safe working load has been attempted.

Simplified Service & Maintenance

The CX12 is purposely designed for ease of servicing, requiring no tools for a number of common tasks. This reduces downtime and contributes to a more efficient care environment for all.



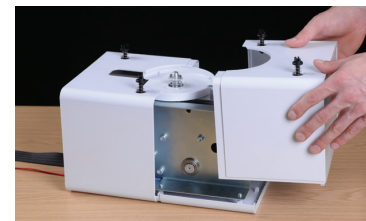
Detachment from the rail takes a matter of seconds. Simply disconnect the charge lead on top of the lift motor and lift, twist and lower the CX12 from its trolley. Attachment is in reverse sequence; remember to connect the charge lead to finish.



The charge lead is easily connected or disconnected from the lift motor.



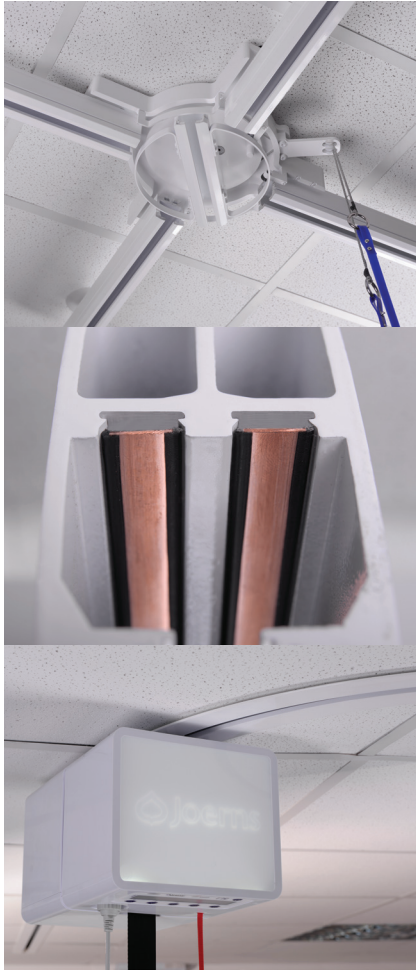
The CX12's outer covers are removable, allowing quick access to internal components for service and maintenance.



DATA DOWNLOAD

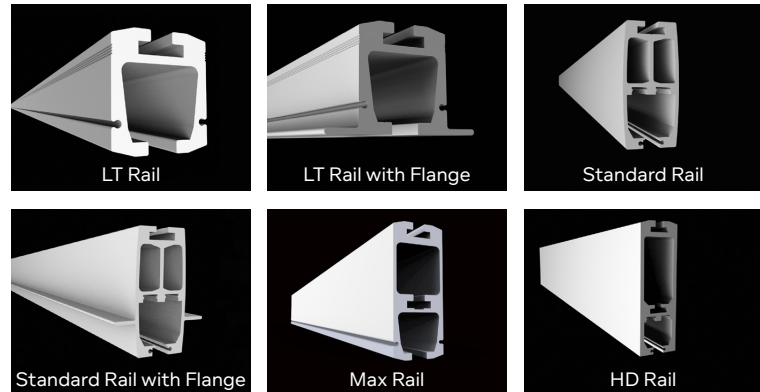



The intelligent Hoyer Smart Monitor continuously records detailed usage data, enabling the service engineer to understand exactly how the lift has been used. A full diagnostic report is readily available for download via computer connectivity.



Track Options & Accessories

Joerns offers a wide range of track, transitions and accessories offering incredible versatility.





For more information on installation possibilities, contact your nearest distributor

Hoyer Patient Slings

Hoyer has been designing and manufacturing slings, the all important patient interface, for over 60 years. There is a Hoyer sling to meet every need. Fabric options are available, as well as specialty slings for hygiene, toileting, repositioning, turning and gait training.



Technical Specifications

| | |
|------------------------------------|--------------------------------------|
| Safe Working Load | 500 lbs (227 kg) 625 lbs (284 kg) |
| Weight (exc. spreader bar) | 26.4 lbs (12 kg) |
| Charging Time (Max) | 6 Hours |
| Lifts Per Charge (176 lbs or 80kg) | 40 |
| Lifting Range | 94.5" (240 cm) |
| Loaded Lifting Speed | Up to 1.34"/sec (3.4 cm/sec) |
| Chauffeur™ Speed (4-way) | 5.9"/sec (15 cm/sec) |
| Noise | 63 dB |
| Intended Operating Environment | 50°F to 104°F (+5°C to 40°C) |
| Ingress Protection - Lift | IPX2 |
| Ingress Protection - Hand Control | IPX6 |

Electrical Specifications

| | |
|---------------------------------------|----------------------------|
| Battery | 2 x 12V SLA (Rechargeable) |
| Battery Capacity | 2.3 Ah |
| Charger Rated Input | 110 - 240 VAC, 50 - 60 Hz |
| Charger Rated Output | 29.4V DC, 0.5A Max |
| Electrical Shock Protection - Charger | Class II |
| Electrical Shock Protection - Lift | Internal Power Source |
| Degree of Shock Protection - Charger | Type B |
| Degree of Shock Protection - Lift | Type B |

Safety Features

| | |
|---|---|
| Soft Start/Stop | ● |
| Overload Protection | ● |
| Emergency Stop | ● |
| Emergency Lower (Electric) | ● |
| Emergency Lower (Mechanical) | ● |
| Up/Down Limit Switch | ● |
| Auto Safety Brake | ● |
| On-board Warning Notifications (Visual / Audible) | ● |

Power Features

| | |
|-------------------------|---|
| Sleep Mode (Power Save) | ● |
| Battery Level Indicator | ● |
| Low Battery Alarm | ● |
| Charging Indicator | ● |

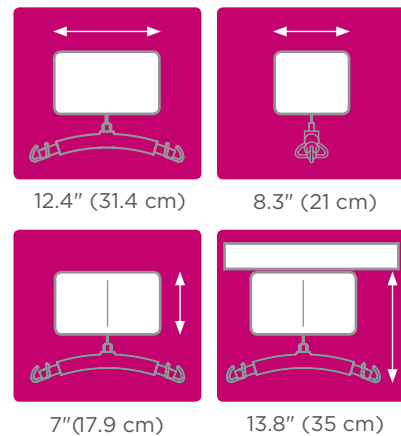
Warranty

Please reference the user manual or contact your authorized representative for details.



Product Dimensions

The CX12 maintains a clean and compact profile while not in use.



Testing Standards

The Duracare® CX12™ is fully compliant with the following standards and directives:

- BS EN 10535
- IEC 60601-1 3rd Edition
- IEC 60601-1-2 Class B EMC
- IEC 60601-1-11
- 93/42/EEC General Medical Devices Directive
- FDA

Through our innovative, quality products, exceptional service and ingrained knowledge and expertise of the healthcare industry, Highgate Healthcare has been raising the standard of living in aged care, hospital, disability and rehabilitation facilities in Australia for over 30 years.



Highgate Healthcare

1300 350 350

2 Selgar Avenue Tonsley SA 5042

highgatehealthcare.com.au