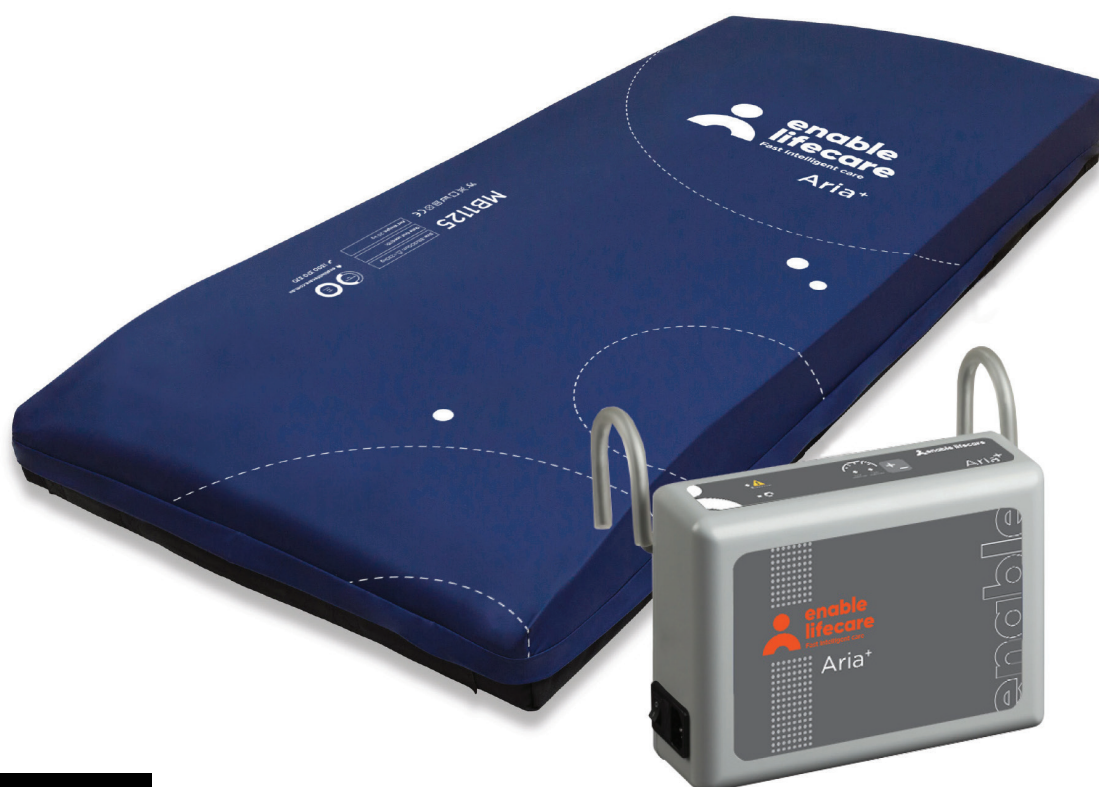


# Aria<sup>+</sup>

Hybrid Pressure Care System





## **FAST**

Our large warehouse and sophisticated fulfilment systems mean we can deliver with speed. This is supported by our online customer services, making it easy to track orders and re-order.

## **INTELLIGENT**

Years of research and development have allowed us to find care solutions that are affordable, innovative and useful. Our products cover manual handling, pressure care and patient safety.

## **CARE**

We know our products inside and out and we want to share this knowledge and expertise. We help our customers find the right care solutions, as well as offering ongoing training, support and product maintenance.

# Aria+

An innovative self-adjusting air mattress



ADD  
PUMP FOR  
GREATER  
PRESSURE  
CARE

Prevention: Very High Risk

Treatment: Category 4\*

Comfort: 

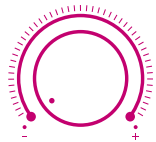
Type: Replacement

## Features

- Heel Relief
- Side Wall Support
- Welded Seams
- Zone Zero Heel Elevation
- \*Add pump to increase to Category 4 treatment

## SPECIFICATION

PRODUCT CODE		SIZE
PR-6782	Single	88x200x18cm
PR-6784	King Single	107x200x18cm
PR-6780	Hybrid Pump	-



THE SOUND OF  
SILENCE



AVOID DISORIENTATION



LOW MAINTENANCE

The Aria+ by Enable Lifecare uses the latest air cell technology to formulate a comfortable and effective mattress for pressure care and prevention.

Air cells react instantly when the patient is repositioned, to equalise the pressure areas.

For lower risk patients and those experiencing up to level 2 pressure injuries the Aria+ can be used on its own. However, with the addition of the Aria+ pump, this mattress can provide comfort, prevention and treatment of those experiencing category 3 and 4 pressure wounds. With the two options available, the Aria+ provides incredible value and cost effectiveness.

The mattress consists of a foam head cell and series of 5 pairs of transverse air cells, each containing a unique foam profiled insert, which are in turn held within a foam U core, all protected by a vapour permeable waterproof cover. The single pillow end consists of foam only. The transverse cells are arranged into alternate pairs of A and B cells which are filled and emptied in sequence.



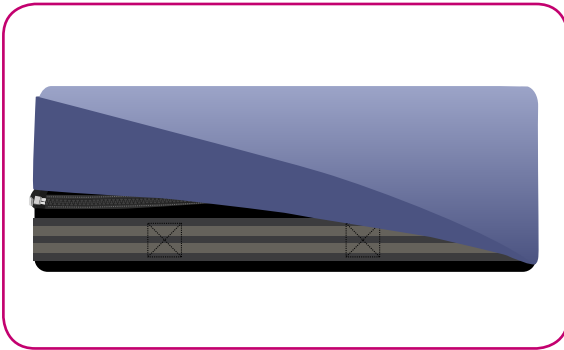
## ZONE ZERO

The Zone Zero function can be used to suspend the heel for 'zero pressure' making it suitable as an aid in the prevention and treatment of heel ulcers up to and including category 4.



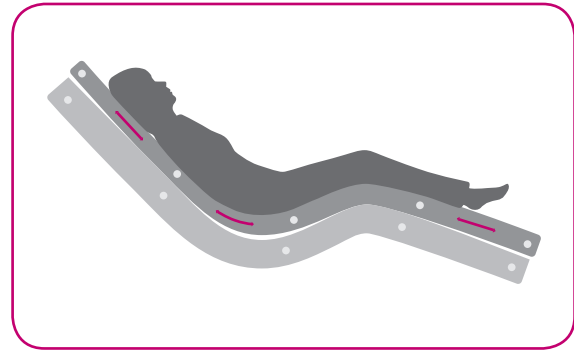
## HEEL SLOPE

The mattress is created with a decline at the foot end. The Heel Slope assists in the prevention of pressure ulcers in one of the most vulnerable areas on the body.



## WATERFALL FLAP

The zip is concealed by a fluid resistant extra long waterfall flap and when opened, gives access to confirm that fluids have not permeated the cover and damaged the foam. Inspection control is maintained for handles.



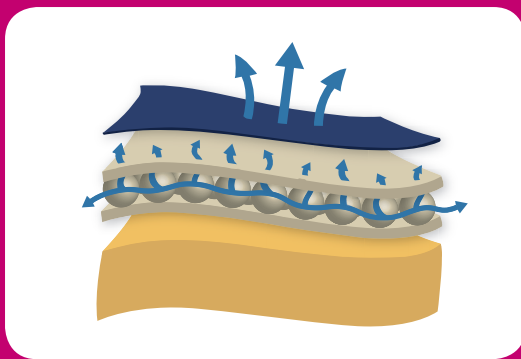
## ANTI-SHEAR

Designed to significantly reduce shear and friction which often leads to tissue damage. The base foam remains in position on the bed frame, whilst the top moves with the user.

## RESPONSIVE FOAM

The Aria+ uses responsive foam with microclimate properties which allows the air to flow through the foam keeping the body cool and dry. Good microclimate management is important in preventing pressure ulcers from forming.

This foam makes up the top pressure relieving layer and Zone Zero feature.



# The Ultimate Mattress Cover

---



## Pressure Relief

The Aria+ mattress covers is designed to significantly reduce pressure ulcers. It has been designed to reduce friction and help disperse moisture, both of which are major contributing factors to the formation of pressure wounds.



## Patient Comfort and Durability

The mattress cover technology provides,

- Multi stretch fabric
- The moisture vapour transfer allows for breathability
- Offer exceptional durability without compromising comfort.



## Infection Control and Cleaning Regime

The Aria+ mattress cover technology incorporates infection control and Anti-decubitus characteristics. It provides an impenetrable barrier to viruses and bacteria. To clean, wipe down with warm water and mild detergent. If required, the cover can be machine washed <95 degrees Celcius. It can be cleaned with a chlorine-based chemical at <10,000 ppm concentration.



## Legislation

The Aria+ mattress cover technology meets the latest legislative requirements including:

- DecaBDE and Halogen-free
- Reach and ROHS compliant
- Biocidal Products Regulation compliant
- Flame retardant cover

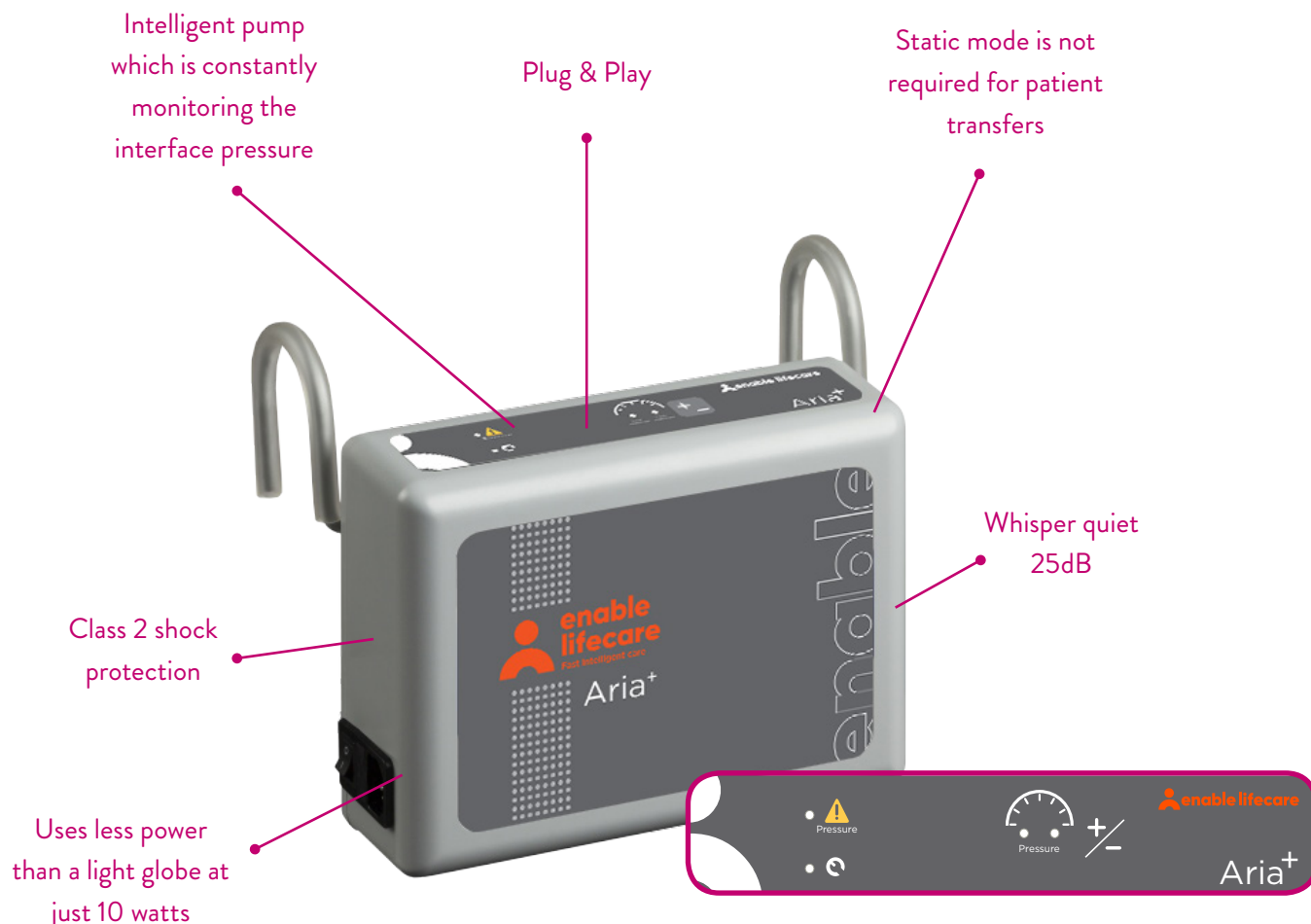


## Technical Specification Summary

- Hydrolysis resistance >1 year
- Excellent resistance to active chlorine
- Anti-decubitus
- FR to BS7175 Crib 5 / Crib 7 variant available
- Autoclave resistant
- Dry cleanable
- Washable to 95 degrees Celsius
- Antibacterial and Antifungal treated
- HF weldable
- MVP (moisture vapour permeability)
- WPR <5m (water penetration resistance)

# The Aria+ Hybrid Pump

## Auto Intelligent Care



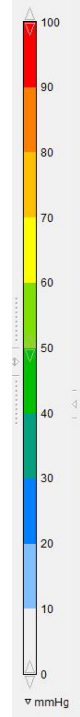
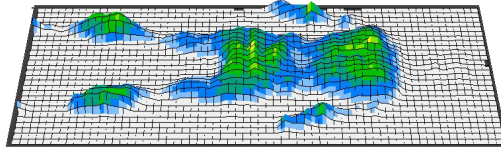
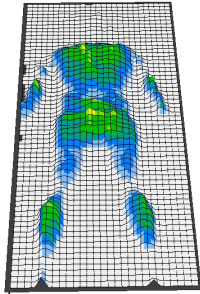
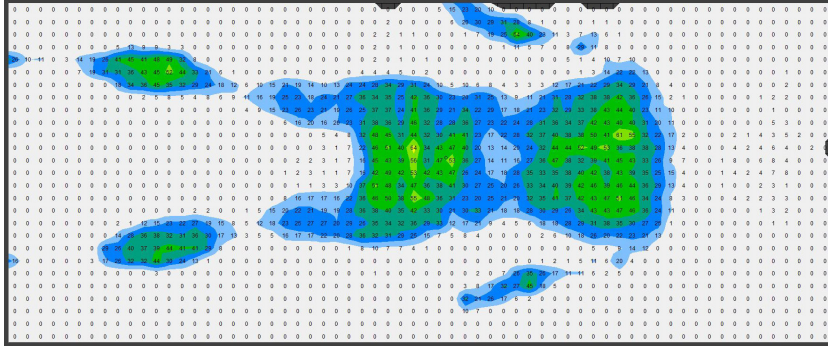
What makes the Aria+ pump unique, is its advanced body responsiveness. With even the slightest movement, the Auto-Intelligent Technology quickly adjusts the mattress pressure, for fast acting comfort for the user. This incredibly intelligent pump allows carers to provide world-class patient care, whilst meeting clinical requirements.

The clinical benefits of a single system are equally applicable to those of a modern hospital setting. A higher maximum weight capacity up to 250kg allows the product to meet the modern challenge of bariatric clients. All component parts are interchangeable, maximising product life and reducing environmental impact.

# Pressure Maps

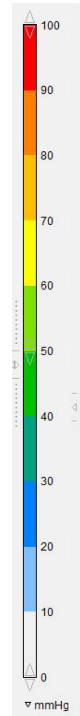
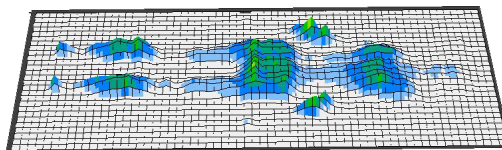
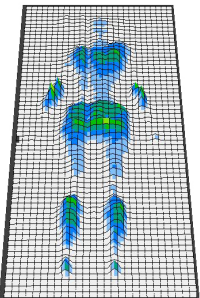
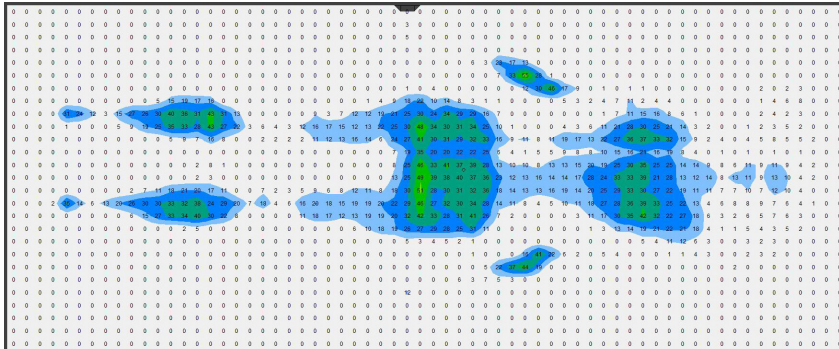
## Aria+ Unpowered

MALE | 90kg 185cm | Average Pressure 8.32 mmHg



## Aria+ Unpowered

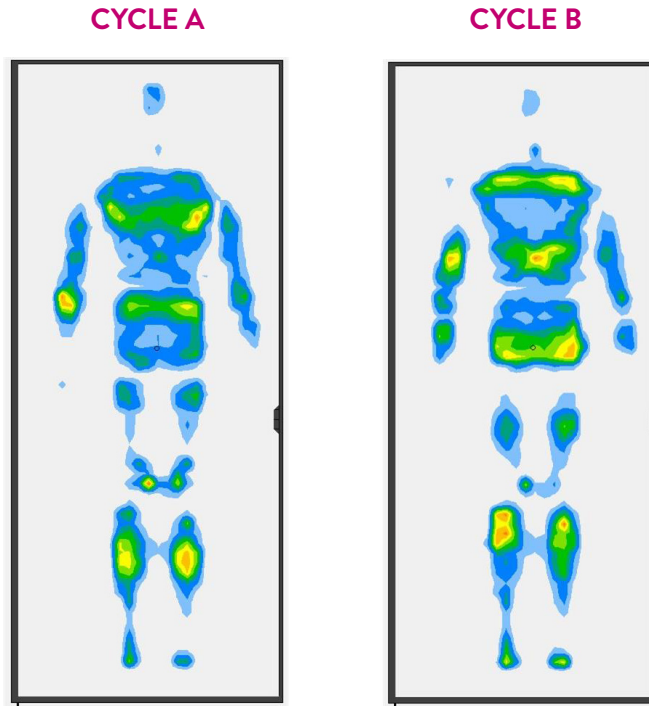
FEMALE | 55kg 165cm | Average Pressure 4.29 mmHg



# Pressure Maps

## Aria+ with Pump

The two images show how the pressure is redistributed during the inflation cycles.

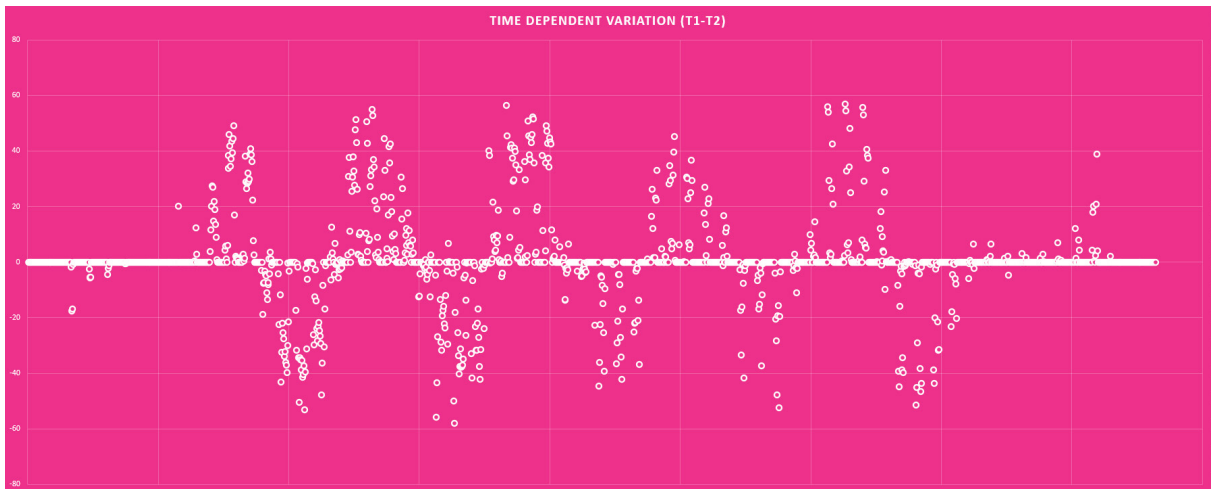


Weight of Model:  
**75 kg**

MEAN PRESSURE	SD	MAX
13.738 mmHg	15.346 mmHg	66.467 mmHg

\*mmHg = millimetre of mercury

Movement of pressure between cycles.



MEAN PRESSURE	SD	MAX
13.738 mmHg	11.601 mmHg	64.712 mmHg



# THE 3E Philosophy

Enable Lifecare deliver specialist care products that give healthcare professionals the ability to make a difference. We are continually developing pressure care products that perform and are beneficial to patient's clinical needs.

Every patient has individual needs. That's why our 3E solution help us to help you deliver the highest standard of care possible.



## Empathy

We strive to fully understand our clients to gain a holistic understanding of their situation, feelings, and goals. Providing the best solution goes beyond choosing the therapeutic device for a specific medical condition. Care, context and understanding are paramount to delivering the best outcome.

## Evaluation

Choosing the perfect product for someone requires more than a gut feeling. Our 3E Philosophy means we consider every aspect of our clients and how the product can work for them. No two people are the same, so we evaluate how each feature can benefit the client.

## Effectiveness

Finding the most effective solution for our clients is determined by the first two E's, Empathy and Evaluation, and adding our expert knowledge, science and application experience. With our client's requirements top of mind, our 3E philosophy seeks to provide a holistic outcome to improve their quality of life.

# NOTES

A series of horizontal dotted lines providing a template for handwritten notes.



Through our innovative, quality products, exceptional service and ingrained knowledge and expertise of the healthcare industry, Highgate Healthcare has been raising the standard of living in aged care, hospital, disability and rehabilitation facilities in Australia for over 30 years.



Highgate Healthcare

1300 350 350

2 Selgar Avenue Tonsley SA 5042

[highgatehealthcare.com.au](http://highgatehealthcare.com.au)